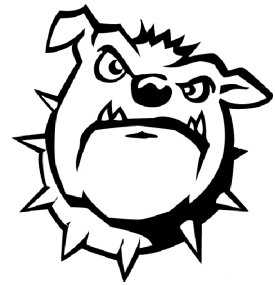


BULLDOG AQUATICS CLUB MEET ENTRY CHECKLIST



LATE ENTRIES CANNOT BE PROCESSED

2010 Winter Waterfest

Hosted By: Club Wolverine Swimming

@ Saline High School, Saline, MI

January 29-31, 2010

UPDATED - NOW ALL BAC SWIMMERS ARE ELIGIBLE!

The entry deadline for Bulldogs is Tuesday, January 19, 2010, 7:00 pm SHARP

The meet payment deadline is: January 29, 2010.

- Logon to www.DirectAthletics.com and enter the events you want your swimmer(s) to swim.
- Questions can be sent to BACMeetEntry@Bulldogaquaticclub.com
- Write a check made payable to BAC and have your swimmer put the check in the plastic envelope marked Meet Payments (located near the folders on deck) within 10 days of the meet entry deadline to avoid a late fee.
- Relays: If your swimmer participates in a relay you are responsible for ¼ of the relay entry fee. Please email Greg at gregphill@bulldogaquaticclub.com if your swimmer is interested in a relay. Include your swimmer's name and the relay event numbers you would like to enter. Also indicate the swim group (puppies, jr. dogs, etc.). If your swimmer is chosen to swim on a relay and participates you will be sent an email a few days AFTER the meet with the amount you owe.
- Confirm your entry. An email will be sent out when the psych sheet is available. It is YOUR responsibility to check for accuracy and omissions in meet event #'s and times. All corrections must be done by YOU using the on-line entry system by the stated deadline (in the email announcement).

No changes can be made once the team's entries have been submitted to the host team. A complete copy of the BAC Meet Entry procedures is available via a link that is on the meet entry & info page.

Entry Fees & Limits **\$4.00 per individual event. \$10.00 per relay team.**
\$1.00 Michigan Swimming surcharge
Swimmers are limited to 1 individual event on Friday
Swimmers are limited to 4 individual events on
Sat & Sun



2010 Winter Waterfest
Hosted By: Club Wolverine Swimming
@ Saline High School, Saline, MI
January 29-31, 2010

Location: Saline High School, 1300 Campus Parkway, Saline, MI 48176. Map to pool available as part of this meet packet (see last page of packet), or at www.mapquest.com .

<u>Times:</u>	<u>Warm Up</u>	<u>Check In Deadline</u>	<u>Start</u>	<u>Age Groups</u>
Friday Evening	5:00 PM	Events 1 thru 4 - 5:15 PM Events 5 and 6 - 6:30 PM (or later, check CW website)	6:00 PM	All Ages
Sat Morning	7:30 AM	7:45 AM	8:30 AM	10&U, 11-12 Girls
Sat Afternoon	12:30 PM	12:45 PM	1:30 PM	11-12 Boys, 13&O
Sun Morning	7:30 AM	7:45 AM	8:30 AM	10&U, 11-12 Girls
Sun Afternoon	12:30 PM	12:45 PM	1:30 PM	11-12 Boys, 13&O

Facilities: Saline High School's pool is an 8 lane pool with a diving well which will be available for supervised warm-up and warm down. Depth at the start is 13' 6" and 7' 4" at the turn end. Permanent starting blocks and non-turbulent lane markers are in place. The competition course has not been certified in accordance with 104.2.2C(4). Daktonics timing/scoreboard with full alpha-numeric display will be used. Adequate balcony seating is available for spectators. Lockers are available (provide your own lock). The 25 yd. events will be swum from the starting blocks.

Eligibility: The *2010 Winter Waterfest* swim meet is an **ABC meet** for swimmers who meet all USA/Michigan Swimming eligibility requirements. A swimmers age on January 29, 2010 determines their age for the entire meet.

Check In: Check-in is mandatory for all events and is required by the time set forth in the schedule of events and this meet announcement. **PLEASE FOLLOW THE POSTED CHECK IN PROCEDURE AND MICHIGAN SWIMMING CHECK IN RULES.** Complete failure to check in prior to the stated time will cause a swimmer to be scratched from **all** events in the session. Also, failing to swim an event after checking in will disqualify a swimmer from his or her next event. Check-in sheets will be posted near the Clerk of the Course. Coaches only at the announcer's table will check in relays during the session.

Scratch Rules: Prior to check in close, a swimmer may scratch events at the Clerk of Course. After check in closes, you must see the Meet Referee to scratch an event. If a swimmer fails to compete in his/her scheduled event without having properly scratched that event, he/she will be disqualified from his/her next event.

Marshaling: All sessions of the meet will be self marshaled. Heat sheets for all events will be posted in the pool area. Swimmers will be responsible for reporting to the starting blocks in time to swim their respective event.

Seeding: All events are timed finals. Saturday and Sunday events will be seeded slowest to fastest. All Friday events will be seeded fastest to slowest (1650 free will alternate genders). The Meet Referee and Meet Director reserve the right to combine genders and/or same stroke/distance events in the Friday events in order to reduce the number of heats.

Admissions/Meet Programs: \$4 per person Friday, Saturday and Sunday for all persons aged 17 and over. All aged 13 to 16 years are charged \$1 for entry. All aged 12 & under and anyone swimming in the meet can enter the spectator area free of charge. Meet program is \$7 on Friday and Saturday and \$4 on Sunday. No heat sheets will be available.

Awards: Ribbons will be awarded for athletes 12 & under, A and B divisions, 1st – 8th places. Ribbons for relays will be awarded 1st through 8th place.

Awards will not be distributed to swimmers: all awards will be given to coaches at the end of the Sunday session. Unattached swimmers may pick up their awards at the awards table after the completion of their last session.

Schedule of Events

Friday evening

Warm-up at 5:00 P.M. Meet Starts 6:00 P.M.

GIRL'S EVENT #	'A' CUT-OFF	'B' CUT-OFF	AGE	EVENT	'A' CUT-OFF	'B' CUT-OFF	BOY'S EVENT #
1	5:59.99	6:49.99	OPEN	500 FREE	5:44.99	6:34.99	2
3	5:34.99	6:31.99	OPEN	400 IM	5:14.99	6:19.99	4
5	22:34.99	25:59.99	OPEN	1650FRE	21:19.99	23:44.99	6

All Friday events swum fastest to slowest heats. The 1650 free will alternate genders. All age groups swim together but results will be by normal age groupings. Note that check-in for the 1650 will end no earlier than 6:30 p.m. Check CW website for details within 48 hours of the meet.

Saturday Morning

Warm-up at 7:30 A.M. Meet Starts 8:30 A.M.

GIRL'S EVENT #	'A' CUT-OFF	'B' CUT-OFF	AGE	EVENT	'A' CUT-OFF	'B' CUT-OFF	BOY'S EVENT #
7	2:23.39	2:48.99	11-12	200 FREE			
8	2:46.99	3:11.99	9-10	200 FREE	2:44.99	3:11.29	9
10		19.09	8&U	25 FREE		19.09	11
12	1:15.99	1:26.99	11-12	100 IM			
13	1:26.49	1:39.49	10&U	100 IM	1:24.99	1:39.99	14
15	1:18.99	1:30.49	11-12	100 BACK			
16	1:30.49	1:44.49	9-10	100 BACK	1:28.99	1:43.99	17
18		26.19	8&U	25 FLY		26.19	19
20	1:18.49	1:35.99	11-12	100 FLY			
21	1:34.99	1:52.99	9-10	100 FLY	1:32.99	1:52.99	22
23	3:11.89	3:41.09	11-12	200 BREAST			
24	44.99	51.59	10&U	50 BREAST	45.49	51.69	25
26	29.99	34.09	11-12	50 FREE			
27	33.79	38.79	10&U	50 FREE	33.29	38.19	28
29	39.69	45.49	11-12	50 BREAST			
30			10&U	200 MEDLEY RELAY			31
32			11-12	200 MEDLEY RELAY			

Saturday Afternoon**Warm-up at 12:30 P.M. Meet Starts 1:30 P.M.**

GIRL'S EVENT #	'A' CUT-OFF	'B' CUT-OFF	AGE	EVENT	'A' CUT-OFF	'B' CUT-OFF	BOY'S EVENT #
			11-12	200 FREE	2:22.99	2:48.99	33
34	2:33.49	3:00.99	13&O	200 IM	2:24.99	2:53.49	35
			11-12	100 IM	1:16.49	1:27.99	36
37	2:44.99	3:22.99	13&O	200 FLY	2:32.99	3:09.99	38
			11-12	100 FLY	1:19.09	1:38.99	39
40	1:21.99	1:34.49	13&O	100 BREAST	1:15.49	1:27.99	41
			11-12	200 BREAST	3:12.89	3:45.79	42
43	1:01.49	1:09.99	13&O	100 FREE	57.09	1:06.99	44
			11-12	50 FREE	29.99	34.29	45
46	2:39.99	3:05.99	13&O	200 BACK	2:31.99	2:59.99	47
			11-12	100 BACK	1:18.29	1:32.99	48
			11-12	50 BREAST	39.39	46.19	49
			13&O	200 MEDLEY RELAY			50
			11-12	200 MEDLEY RELAY			51

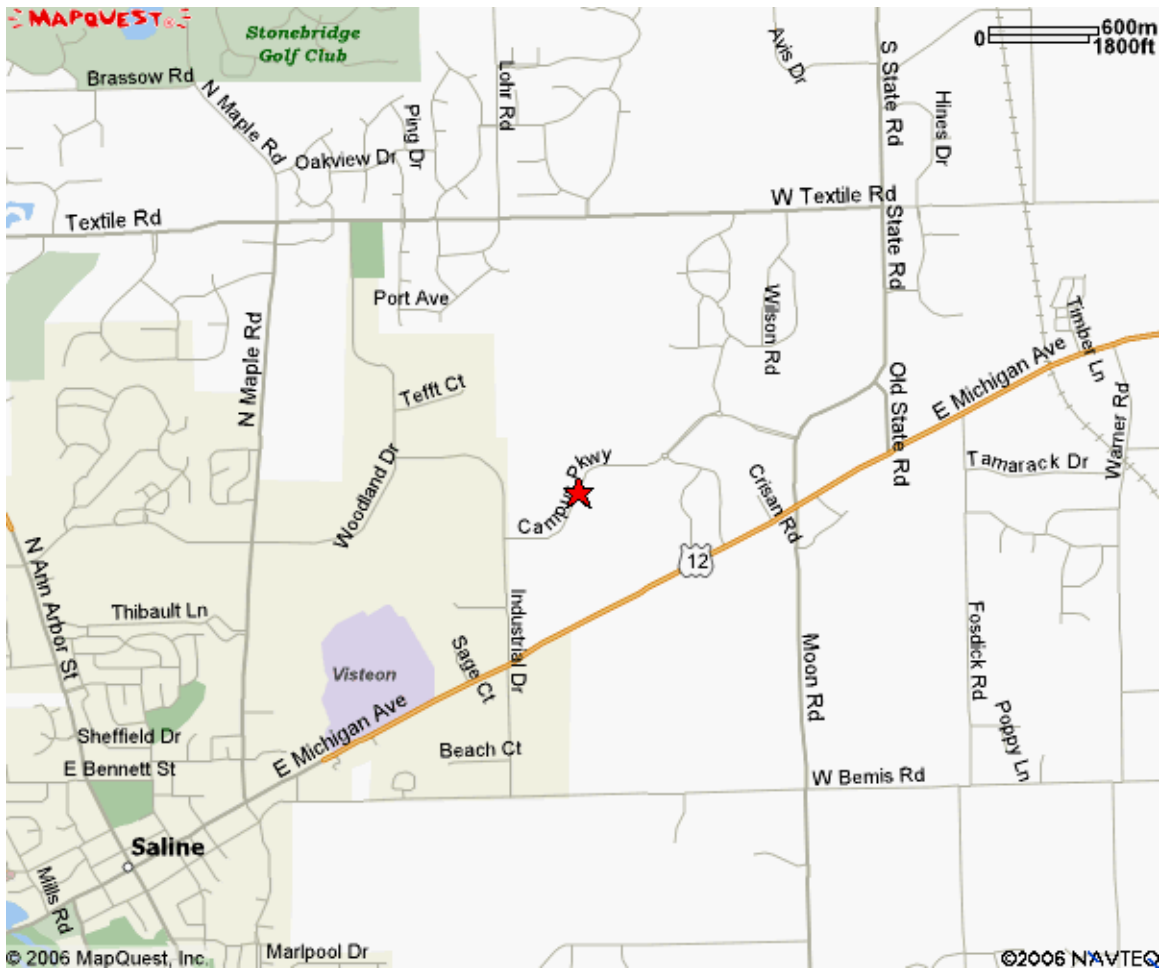
Sunday Morning**Warm-up at 7:30 A.M. Meet Starts 8:30 A.M.**

GIRL'S EVENT #	'A' CUT-OFF	'B' CUT-OFF	AGE	EVENT	'A' CUT-OFF	'B' CUT-OFF	BOY'S EVENT #
52	2:44.49	3:09.99	11-12	200 IM			
53	3:11.99	3:40.99	9-10	200 IM	3:11.99	3:44.19	54
55		28.69	8&U	25 BREAST		28.69	56
57	2:55.89	3:22.29	11-12	200 BACK			
58	1:37.99	1:54.99	9-10	100 BREAST	1:38.89	1:51.99	59
60		24.59	8&U	25 BACK		24.59	61
62	36.29	40.99	11-12	50 BACK			
63	41.09	46.99	10&U	50 BACK	40.29	46.49	64
65	2:56.29	3:33.29	11-12	200 FLY			
66	40.09	48.99	10&U	50 FLY	39.99	50.49	67
68	1:05.99	1:16.79	11-12	100 FREE			
69	1:15.89	1:28.99	10&U	100 FREE	1:14.19	1:29.99	70
71	1:25.49	1:38.99	11-12	100 BREAST			
72	33.99	40.49	11-12	50 FLY			
73			10&U	200 FREE RELAY			74
75			11-12	200 FREE RELAY			

Sunday Afternoon

Warm-up 12:30 P.M. Meet Starts 1:30 P.M.

GIRL'S EVENT #	'A' CUT-OFF	'B' CUT-OFF	AGE	EVENT	'A' CUT-OFF	'B' CUT-OFF	BOY'S EVENT #
			11-12	200 IM	2:44.69	3:11.99	76
77	2:13.99	2:35.99	13&O	200 FREE	2:06.99	2:27.99	78
			11-12	100 FREE	1:05.99	1:16.99	79
80	1:12.99	1:24.99	13&O	100 BACK	1:09.99	1:20.99	81
			11-12	200 BACK	2:55.09	3:32.99	82
83	1:10.49	1:24.49	13&O	100 FLY	1:05.99	1:22.99	84
			11-12	200 FLY	2:56.89	3:40.69	85
86	2:55.99	3:22.49	13&O	200 BREAST	2:44.99	3:11.99	87
			11-12	100 BREAST	1:26.19	1:40.99	88
			11-12	50 BACK	36.29	42.19	89
90	28.39	32.59	13&O	50 FREE	26.39	30.49	91
			11-12	50 FLY	34.09	41.99	92
93			13&O	200 FREE RELAY			94
			11-12	200 FREE RELAY			95



Saline High School, 1300 Campus Parkway, Saline, MI 48176